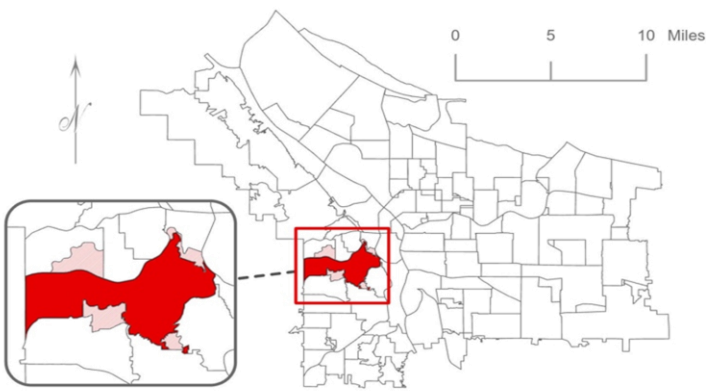


Southwest Hills



CENSUS DEMOGRAPHIC DATA:¹

		2010	%	Change		2020	%
POPULATION	TOTAL POPULATION	7,971	100%	+556	+7%	8,527	100%
	Age <5	327	4%	+49	+15%	376	4%
	Age 5-9	504	6%	-61	-12%	443	5%
	Age 10-14	487	6%	+59	+12%	546	6%
	Age 15-19	423	5%	+118	+28%	541	6%
	Age 20-24	344	4%	+128	+37%	472	6%
	Age 25-29	367	5%	+66	+18%	433	5%
	Age 30-34	348	4%	+93	+27%	441	5%
	Age 35-39	437	5%	+57	+13%	494	6%
	Age 40-44	617	8%	-73	-12%	544	6%
	Age 45-49	577	7%	+108	+19%	685	8%
	Age 50-54	644	8%	-16	-2%	628	7%
	Age 55-59	733	9%	-183	-25%	550	6%
	Age 60-64	712	9%	-201	-28%	511	6%
	Age 65-69	471	6%	+129	+27%	600	7%
	Age 70-74	294	4%	+225	+77%	519	6%
	Age 75-79	254	3%	+76	+30%	330	4%
	Age 80+	431	5%	-18	-4%	413	5%
Age <18	1,628	20%	+84	+5%	1,712	20%	
Age 18-64	4,893	61%	+60	+1%	4,953	58%	
Age 65+	1,450	18%	+413	+28%	1,863	22%	
Median Age	46.6		-1.4	-3%	45.2		
Area (sq mi)	2.94		0.0	+0%	2.94		
Population density (persons per sq mi)	2,711		+189.1	+7%	2,900		
RACE/ETHNICITY	RACE ALONE OR IN COMBINATION³						
	Total races tallied, of which:	8,222	100%	+1,167	+14%	9,389	100%
	American Indian or Alaska Native	67	0.8%	+76	+113%	143	1.5%
	Asian	466	5.7%	+332	+71%	798	8.5%
	Black or African American	85	1.0%	+113	+133%	198	2.1%
	Native Hawaiian or Pacific Islander	24	0.3%	+18	+75%	42	0.4%
	Some other race	78	0.9%	+421	+540%	499	5.3%
	White	7,502	91%	+247	+3%	7,749	83%
	Hispanic or Latino (any race):	236	3.0%	+227	+96%	463	5.4%
	White alone, not Hispanic or Latino:	7,111	89%	-262	-4%	6,849	80%
Racial/Ethnic Diversity Index ⁴	16%		+14	+87%	31%		

SOCIOECONOMIC INDICATORS:¹

2020 CV ²

NOTES and DEFINITIONS

HOUSING ⁵	Total households	3,453	
	Rent burdened	44%	
	Severely rent burdened	23%	
	Severely crowded	2%	
	With one or more children <18	28%	
	Average household size	2.5	
	Vacancy rate	7.0%	
	Homeownership rate	63%	
	Median home value (of owned homes)	\$827,872	
	Median gross rent	\$1,625	
ENGAGEMENT	2020 General Election voter turnout as a share of the population age 18+	91%	
	Broadband access (cable, fiber, or DSL)	88%	
	2020 Census self-response rate	83%	
	Residents who were not living in Portland 12 months ago:	8%	
EDUCATION	Percent of population age 25+ with: No completed High School or GED	2%	●
	Bachelor's degree or higher	76%	
	Share of children 5-17 in school who attend a public school	70%	
HEALTH	Food insecurity ⁶	8%	
	Disability ⁷	10%	
	Social vulnerability (SVT) ⁸	3.6	
	Life expectancy at birth (years)	81.8	
INCOME	Share of area covered by tree canopy	58%	
	Share of persons living in households with income below poverty line	8%	
	Median household income	\$139K	
LANGUAGE	Share of households at or below \$75k (approx. median city income in 2020)	33%	
	Limited English proficiency (LEP) persons: ⁹	304	
	by language spoken at home (by ≥15 persons):		
	Chinese (incl. Mandarin, Cantonese, others)	79	
	Other Asian and Pacific Islands	68	
	Spanish	67	
	Vietnamese	28	●
	Slavic (Russian, Ukrainian, Polish, others)	22	●
French (incl. Haitian)	17		
German (incl. Dutch, Afrikaans)	15	●	

- * Neighborhood boundaries overlap, and some neighborhoods extend beyond Portland city limits. Some areas within Portland city limits are not claimed by a neighborhood association. For these reasons, the sum of the population of all neighborhoods does not equal the city total.
- 1 Population & race/ethnicity, housing units/households, vacancy rate and household size for 2010 and 2020 from decennial U.S. Census; additional indicators from 2017-2021 5-year ACS, based on proportional allocation of census tract data to census blocks, and of census blocks to neighborhoods (see methodology report).
- 2 Coefficient of Variation (CV) is an indicator of data reliability in the ACS, the ratio of the standard error (SE) to the estimate. High reliability: CV < 20 (not indicated). Medium reliability: 20 ≤ CV ≤ 40 (● yellow). Low reliability: CV > 40 (● red).
- 3 For race/ethnicity "alone or in combination", each multiple-race person is counted multiple times (once for each self-identified race). Sum of "total races tallied" therefore exceeds total population.
- 4 Diversity Index is the chance that two randomly selected persons are of a different race/ethnicity.
- 5 Rent burdened households spend ≥30% of income on rent (≥50% indicates severely burdened). Crowded means >1 occupants per room (>1.5 indicates severely crowded).
- 6 Food insecurity refers to predicted lack of reliable access to nutritionally adequate foods.
- 7 Disability includes non-institutionalized persons who have self-reported difficulties in one or more of: hearing, vision, cognitive, ambulatory, self-care, or independent living.
- 8 SVT is an assessment of communities' access to emergency services and programs before, during, and after disasters. Higher number indicates higher vulnerability.
- 9 LEP means speaking English less than "very well". Not all languages spoken in Portland are represented in the data. More information at portland.gov/officeofequity/language-access/.

Neighborhood profiles are a project of the City of Portland Office of Civic Life, in partnership with the Portland State University Population Research Center.

SOURCES	PortlandMaps Open Data (gis-pdx.opendata.arcgis.com/datasets/). U.S. Census Bureau TIGER/Line files; 2010 census SF1 file, 2020 census DHC and Response Rate files; American Community Survey (ACS) 2017-2021 5-year detailed tables; Feeding America (www.feedingamerica.org); CDC Life Expectancy Estimates Project (USALEEP); Metro-RDPO Social Vulnerability Tools (rdpo.net/social-vulnerability-tools-project); Metro RLIS Canopy 2020 (rlisdiscovery.oregonmetro.gov); L2 Voter Data (l2-data.com). See also Notes and Definitions.
----------------	---